

BIOXEL

Fractional CO₂ Laser System



BIOXEL

SPECIFICATIONS

Laser Source	
Laser Type	CO ₂ Laser
Wave length	10.600nm
Laser power	1 - 40W
Power Supply	220-240V~, 50/60 Hz
Cooling System	Water Cooling
Dimensions	430(W) x 480(D) x 1240(H)mm
Weight	47kgs
Display	10.2" Touch Screen Color LCD
Function – Fractional CO ₂	
Hand Piece Type	Fractional Hand Piece LVR Hand Piece(Optional)
Scan Size	2x2-20x20mm
Shape	Square, Hexagon, Triangular, Circular
Pattern	Array, Grid, Random
Depth	1-5 Level
Repeat Time	0.5-2.5sec, Single
Density	1-23 Level
Function – General CO ₂	
Hand Piece Type	50mm, 100mm Hand Piece E.N.T & Dental Hand Piece(Optional)
P.Duration	CW : 2-30ms Normal Pulse : 5-20ms Super Pulse : 1.0-4.0ms Ultra Pulse : 90-900μs
Repeat Time	off, 2-500ms
Operation Mode	CW, S.Continuous, Normal Pulse, Super Pulse, Ultra Pulse

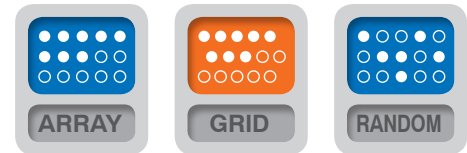


BIOXEL

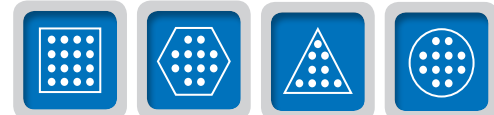
Fractional CO₂ Laser System

Features

- Fractional & Low Pain Fractional & General CO₂ mode
- Reduced Pain & Excellent effectiveness
- Three Patterns



- Smart & Various Protocols for use's convenience
- Max 4489 dots to an area of 20x20mm
- Various scan shapes

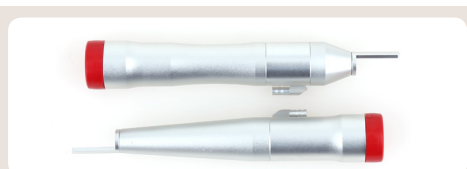


MAIN MODE

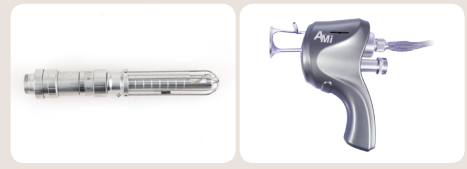
- General Mode
- Fractional Mode
- Low Pain Fractional Mode

Smart Protocols

- General Surgery
- Dental Surgery
- Fractional CO₂ Laser
- Low Pain Fractional CO₂ Laser
- LVR(Laser Vaginal Rejuvenation)



General Hand Pieces(50mm, 100mm)



Manual LVR Hand Piece Fractional Hand Piece



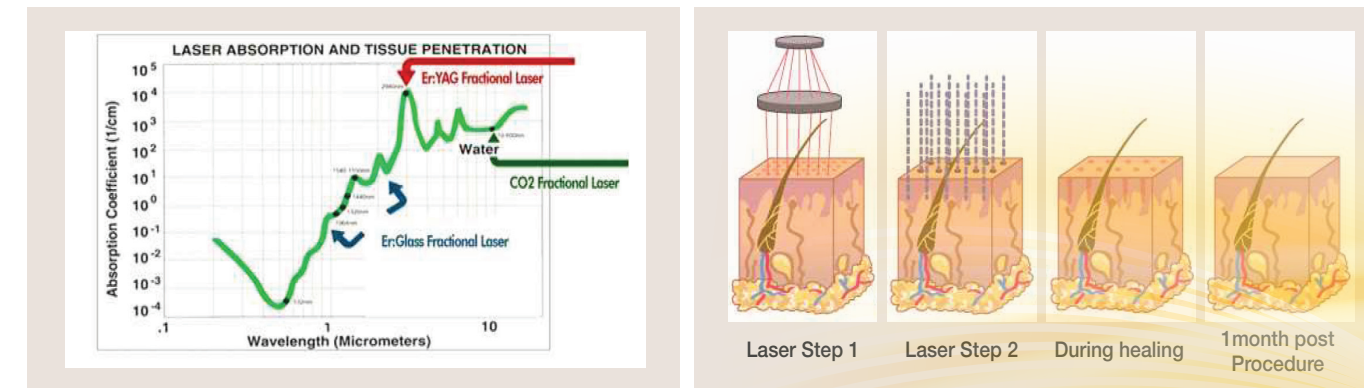
BIOXEL

Introduction

- Fractional Laser uses very fine laser beam to minimize skin damage by heat and to shorten the recovery and rejuvenation period. Therefore, the patients can resume normal daily activities soon after treatment.
- Fractional laser uses a CO₂ tube to improve the effects of treatment. This CO₂ tube has a long life time, stability and advantage of precise treatment.
- Treatment time can be shortened by adjusting spot size and the beam density, which is beneficial for both of the operator and the patient.

What is the Fractional?

Dividing Laser beam very finely (smaller than hair) and irradiating to Epidermis fractionally makes many small thermal lesions to the skin structure without any serious damages. By this system, the skin will be recovered rapidly with no side effect and during this time the skin rejuvenated naturally.



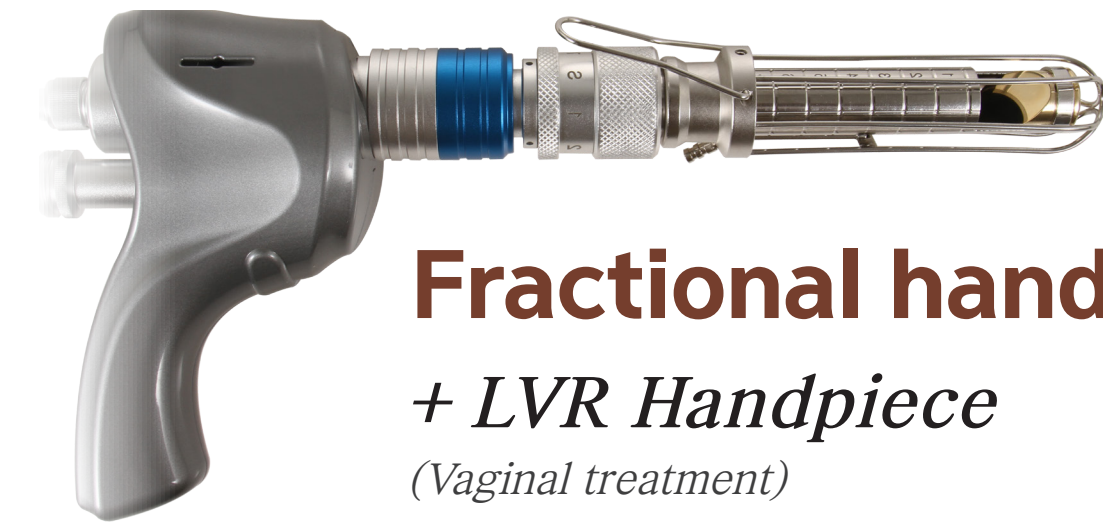
Applications

- Skin Tightening
- Acne Scar
- Warts / Mole
- Skin Resurfacing
- Large Pore
- Freckles
- Wrinkle
- Stretch Mark
- LVR(Laser Vaginal Rejuvenation)

Clinical Pictures (Before & After)



< Before & After >



Fractional handpiece

+ LVR Handpiece

(Vaginal treatment)

Fractional handpiece (for Labium Treatment)



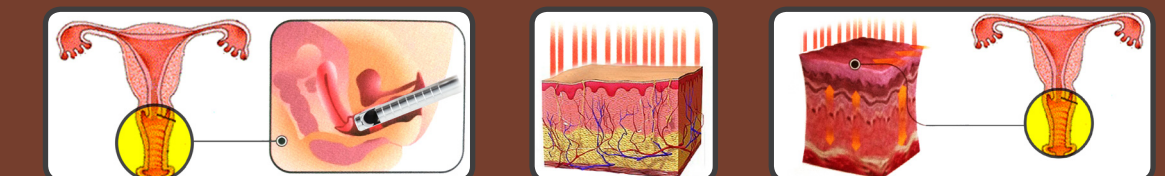
Smart protocol for LVR by Manual Treatment



Fractional handpiece + Auto Vaginal Rejuvenation Handpiece



How does it work?



high density laser beam delivers to vagina widely and it makes vaginal tightening & rejuvenation.

